

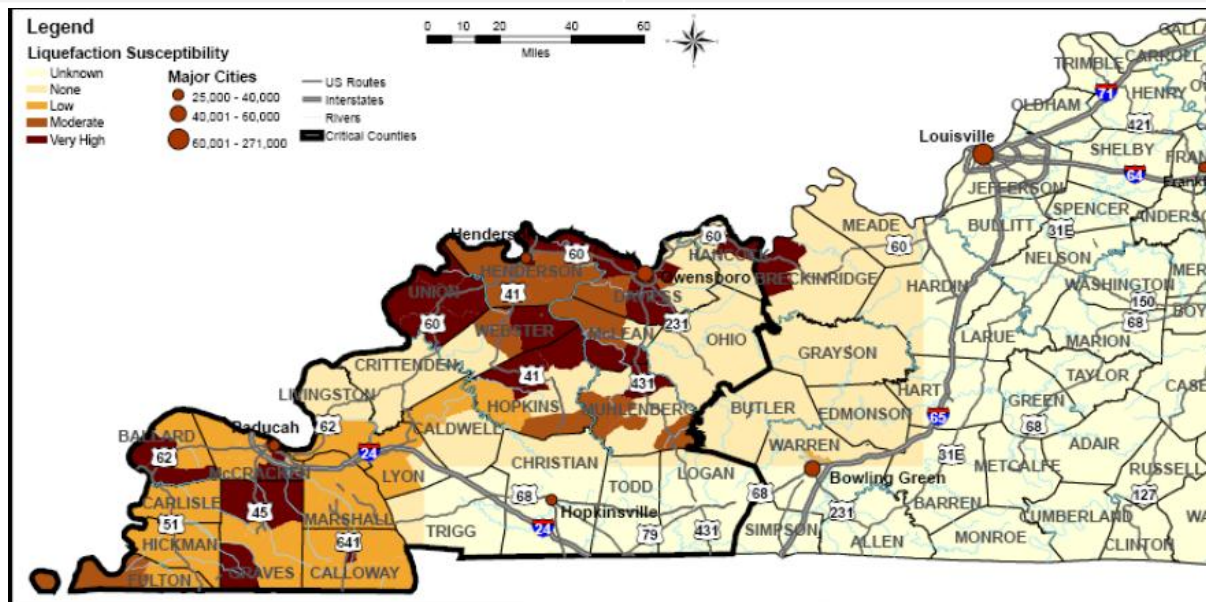
Kentucky Impact Overview

Capstone 14 Exercise

General Impact

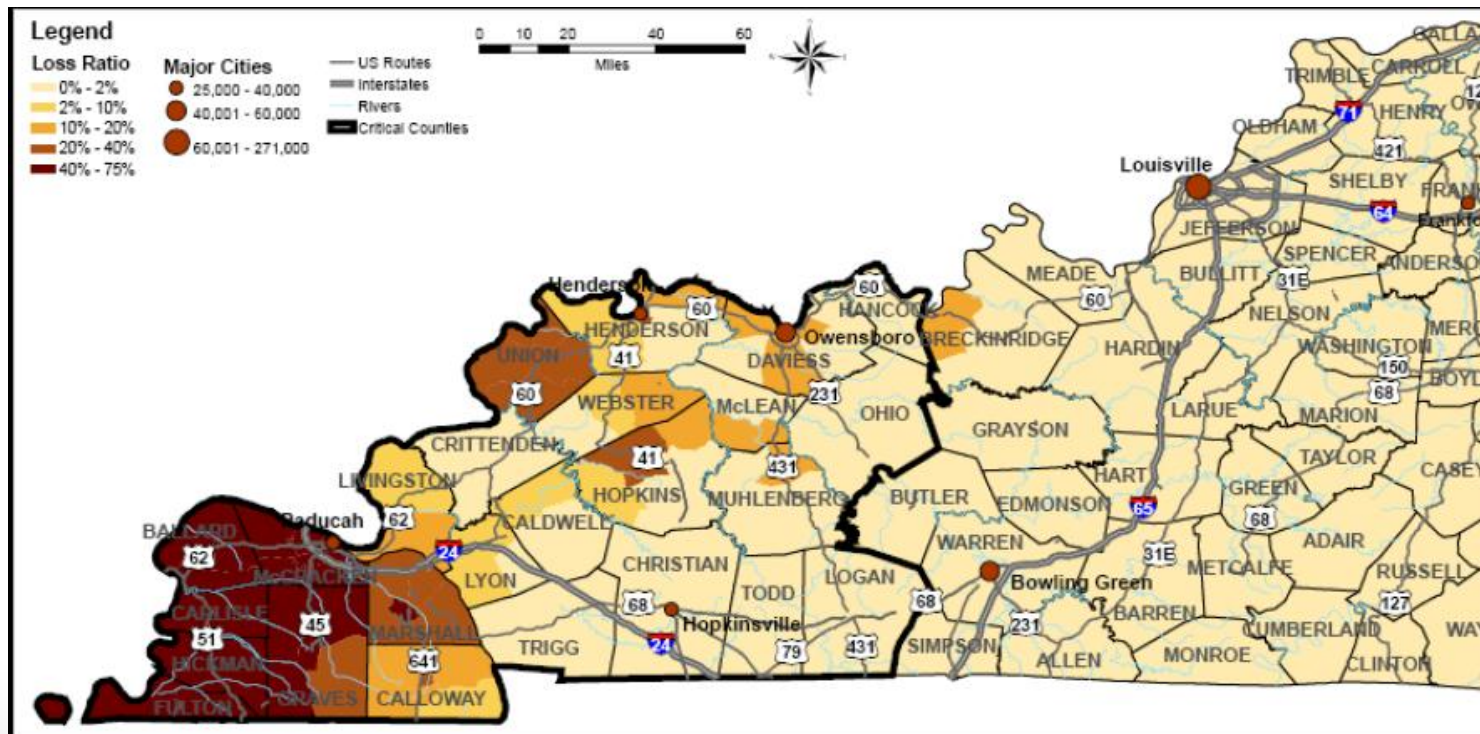
Overview

Total Structures Damaged	68,400
Total Injured	6,000 +
Total Fatalities	300
Total Seeking Shelter	233,000 +
Total Households Without Power	330,000
Total Households Without Water	76,000



Building Damage

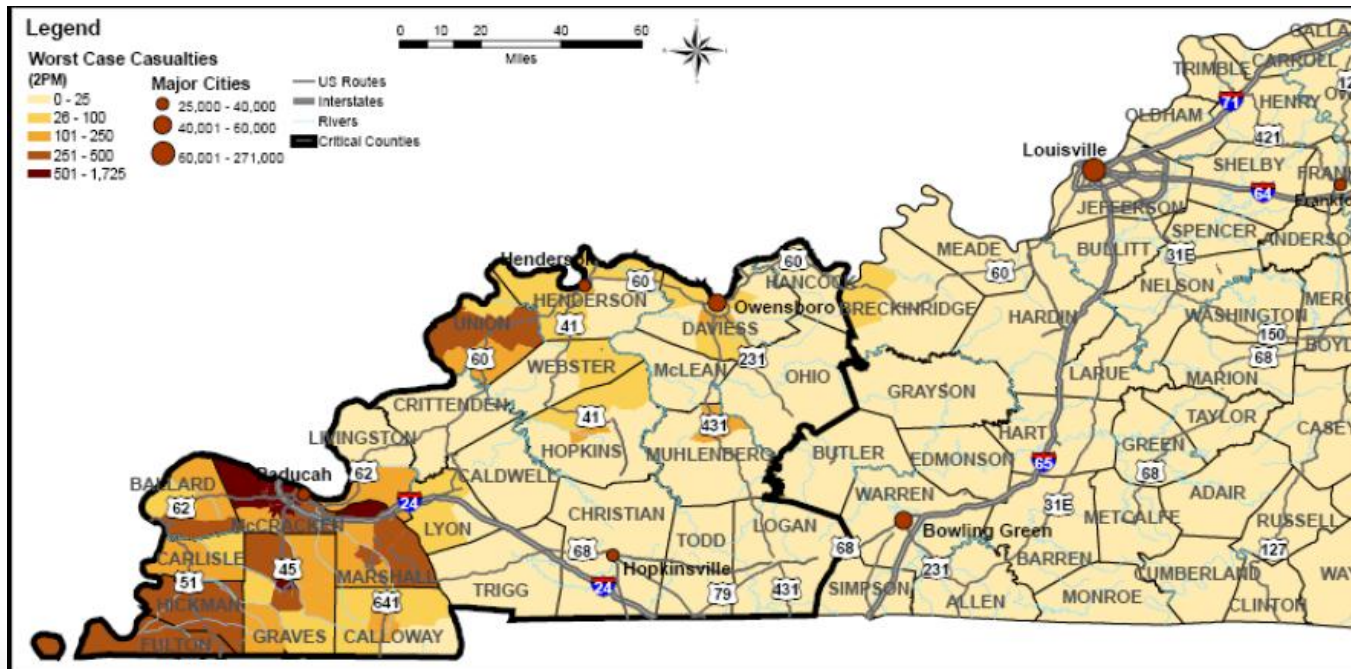
Breakdown of Damage	
Residential	64,900
Commercial, Industrial and Other	3,500
Total	68,400



Total Number of Injured

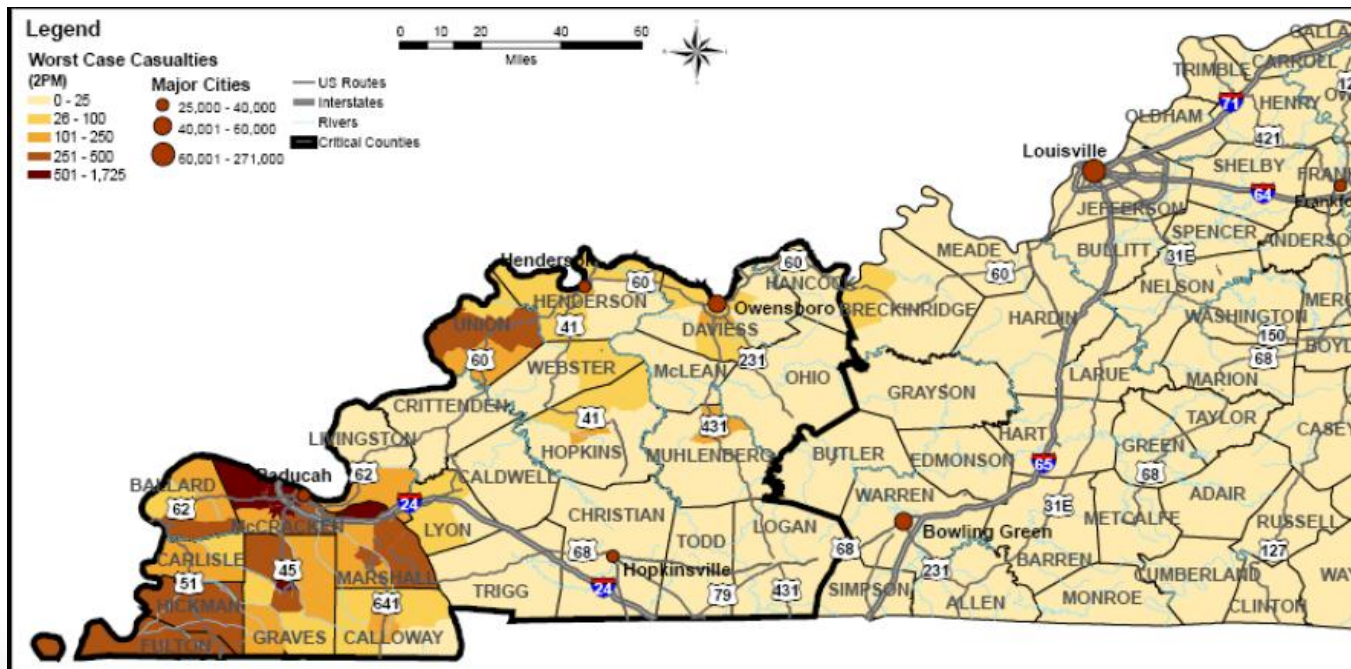
Breakdown of Injuries

Medical Aid Needed	4,977
Hospital Care Needed	1353
Life Threatening	153
Total	6483



Total Number of Fatalities

Fatalities	
Total	300



Shelter Seeking Populations

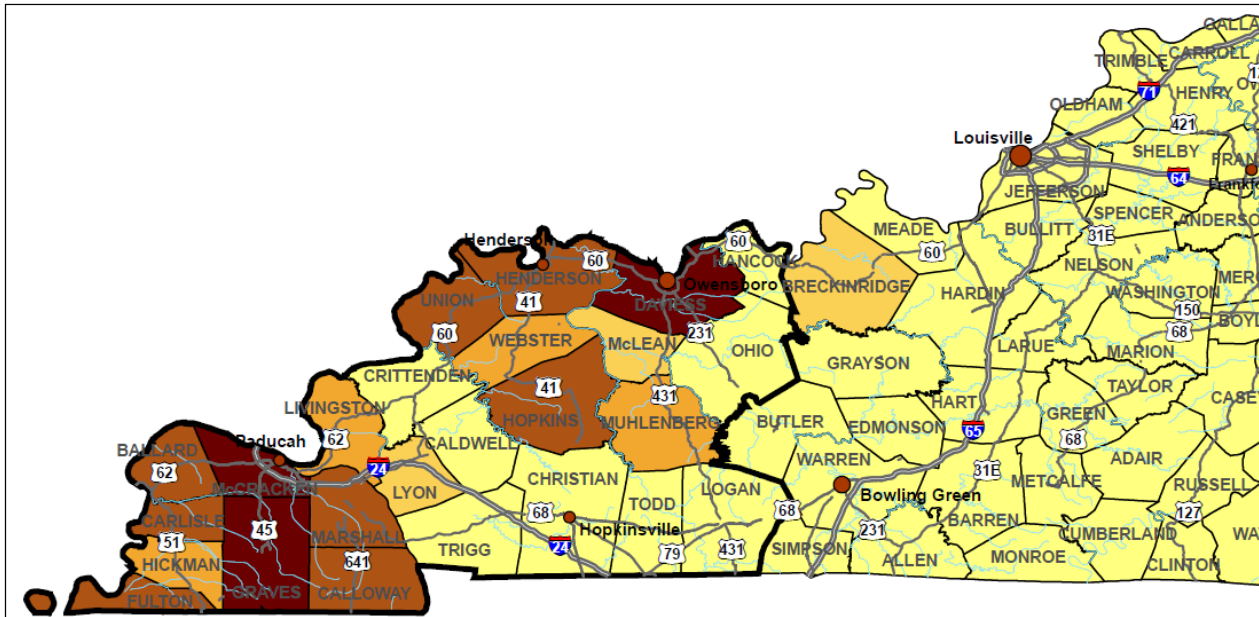
Shelter Seeking

Total

233,000 +

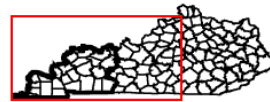
Displaced Population - New Madrid Seismic Zone: M7.7 Event

November 2007



State of Kentucky - Critical Counties (25)

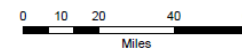
County	Displaced Residences	Estimate of Displaced Population	County	Displaced Residences	Estimate of Displaced Population
Ballard	1,275	3,113	Livingston	205	504
Caldwell	5	20	Logan	0	0
Calloway	1,243	3,054	Lyon	76	212
Carlisle	1,051	2,548	McCracken	10,321	24,379
Christian	5	15	McLean	172	428
Crittenden	0	0	Marshall	2288	5553
Daviess	3,817	9,597	Muhlenberg	379	975
Fulton	1,156	2,769	Ohio	0	0
Graves	4,307	10,745	Todd	0	0
Hancock	0	0	Trigg	0	1
Henderson	1,963	4,954	Union	1,427	3,907
Hickman	740	1,779	Webster	293	745
Hopkins	993	2,453			



Critical counties are those that experience the greatest probability of reaching the specified damage state. For definitions of 'Complete' and 'At Least Moderate' damage states please consult the attached document, 'GUIDE FOR IMPACT ASSESSMENT TERMINOLOGY.'

Legend

- Displaced Population**
- 0 - 50
 - 51 - 500
 - 501 - 2,000
 - 2,001 - 6,000
 - 6,001 - 24,400
- Major Cities**
- 25,000 - 40,000
 - 40,001 - 60,000
 - 60,001 - 271,000
- US Routes
 — Interstates
 — Rivers
 — Critical Counties

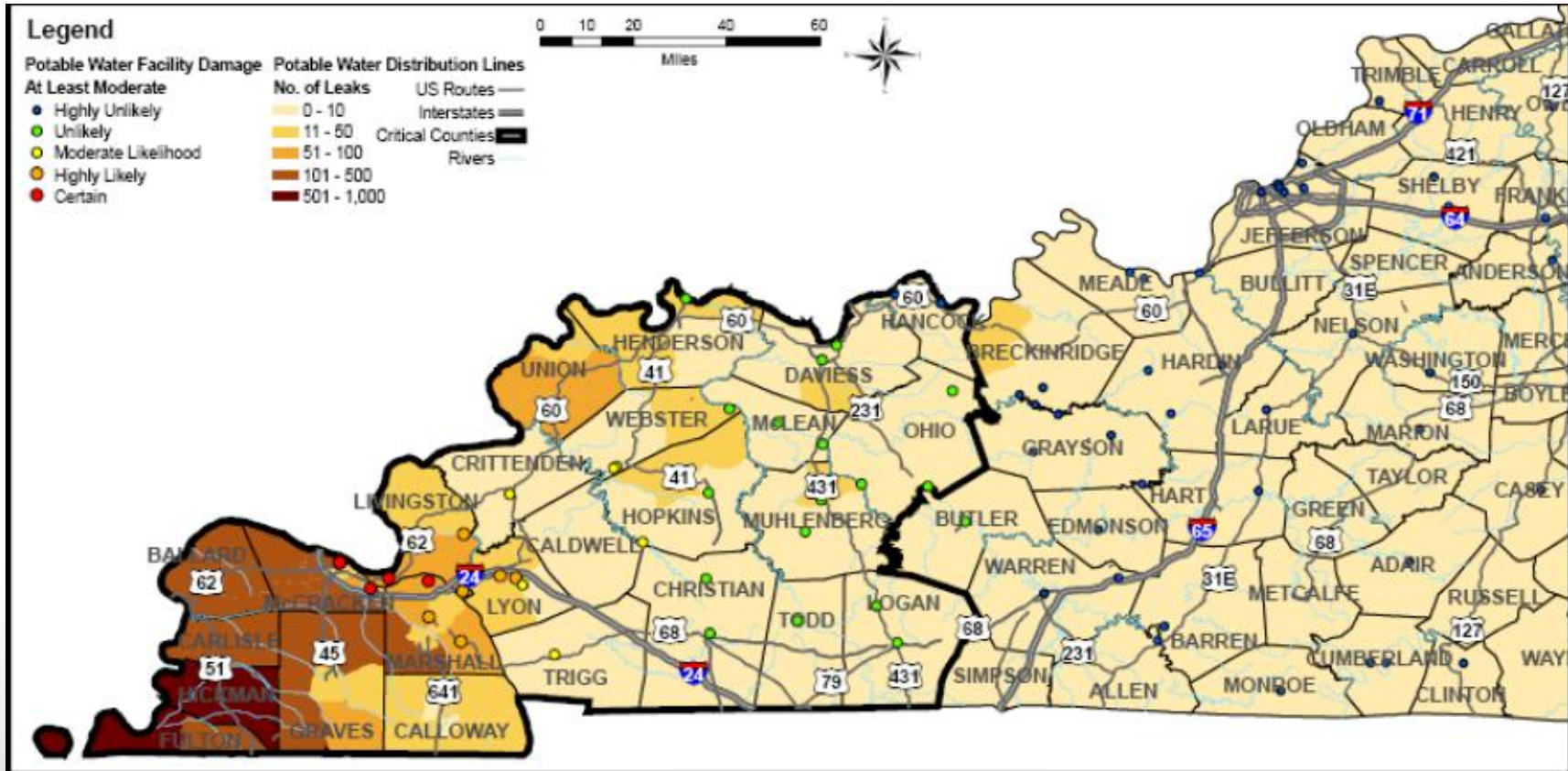


Water System Disruptions

Number Affected

Total

108,000 + Households



Immediate Priorities (E+72hrs)

Priorities

Activate Statewide Search and Rescue Response

Recon Tier I Named Areas of Interest (MSR's, C2 , Infrastructure)

Establish JRSOI's

Establish State Logistics Center

Critical Locations

Bowling Green Airport

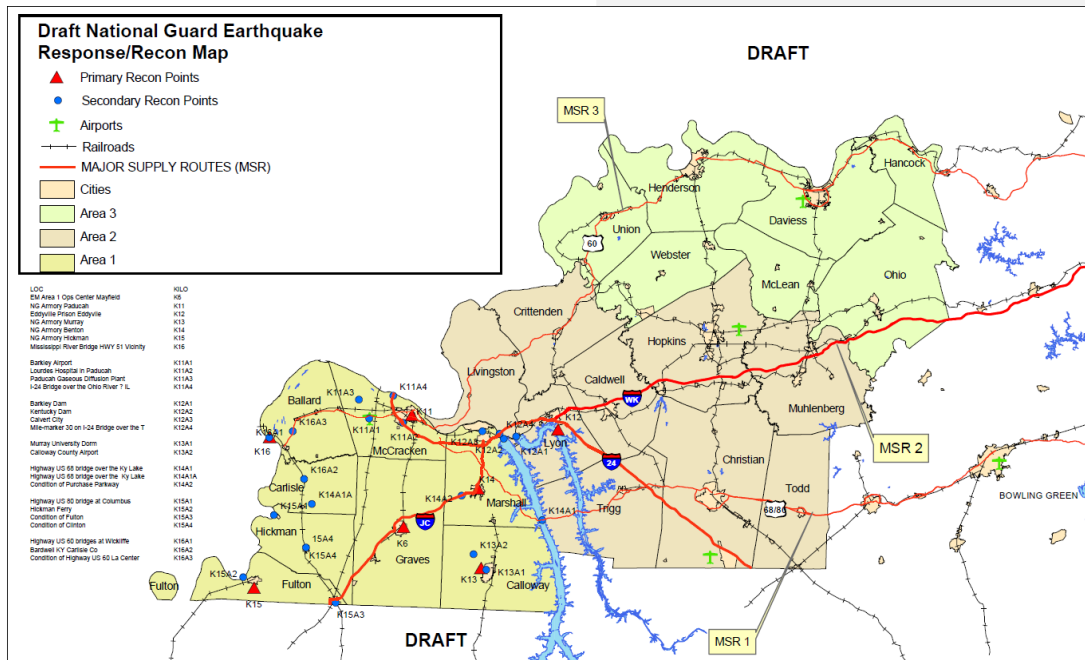
Kentucky Dam

Wendell H. Ford Regional Training Ctr

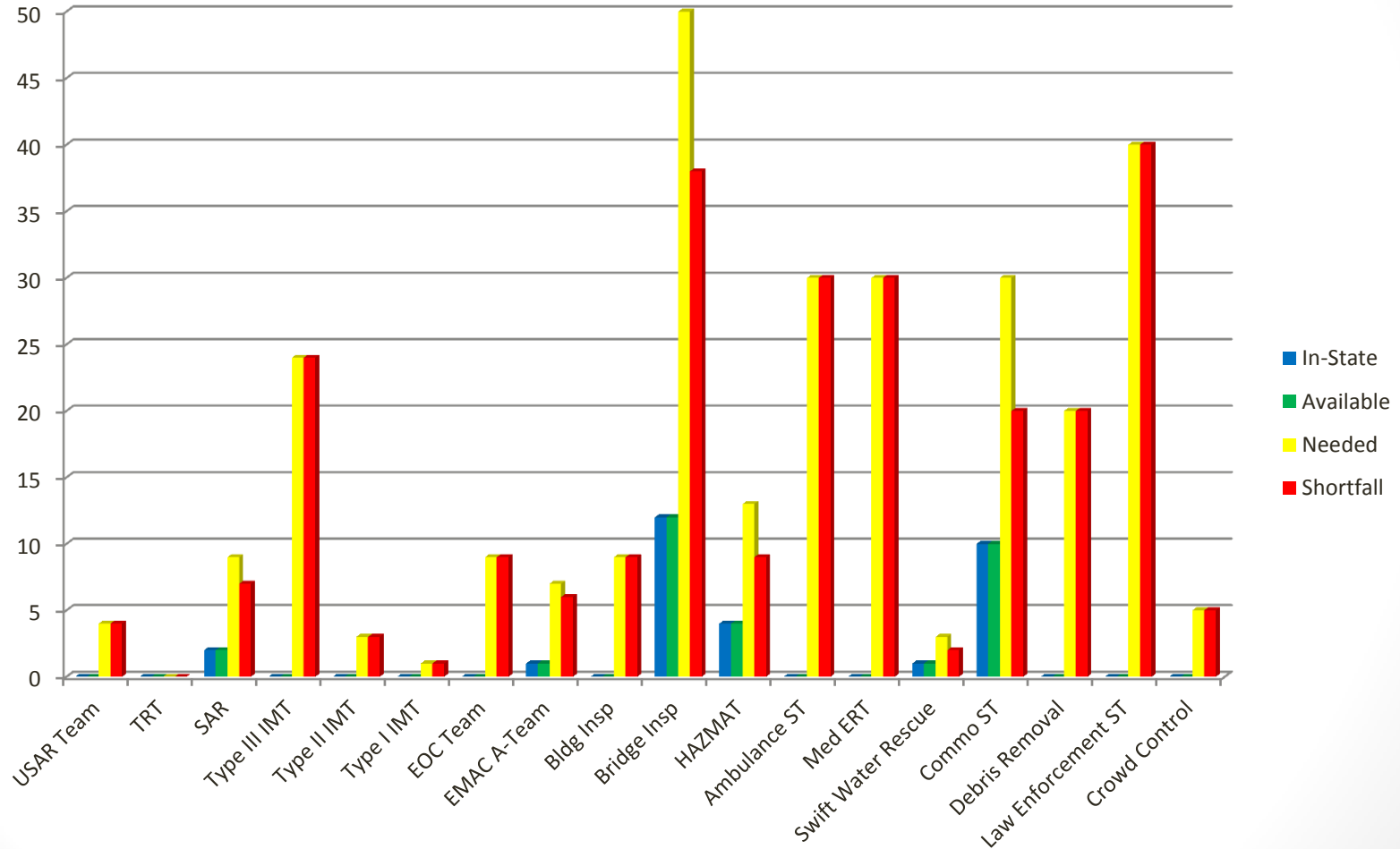
Regional Coordination Center Initial Loc's

Levees along the Mississippi

Ohio River Locks



Kentucky Resource Assessment



Planning Metrics (1st 30 days)

- **USAR – Based on minimal support to urban areas**
- **TRT – N/A**
- **SAR – Based on conducting initial focused SAR in specified areas then expanding to rural areas**
- **IMT – Based on one per county, 1 per Regional Command and 1 per Unified Area Command**
- **EOC Team – Per State EOC**
- **EMAC A-Team – Per State EOC (24/7 shifts)**
- **Bldg/Bridge Inspection – Based on minimum required bridges – based on estimated building destruction**
- **HAZMAT – Known infrastructure assessment (refineries, chemical plants, etc)**
- **Ambulance Strike Team – Casualty estimates, and transport distance (10 ambulance per team)**
- **Med ERT – Per Damage Estimate of Medical Infrastructure (2 per hospital)**
- **Water Rescue – Per major waterway in impacted area**
- **Commo Strike Team – Based around support to command and control elements at county, region and area commands**
- **Debris Removal – focused on counties estimated to have highest debris**
- **LE Strike Team – Based on support to County Prisons, Two State Prisons**
- **Crowd Control – Support to major evacuee centers**

Planning Metrics

QUESTIONS?