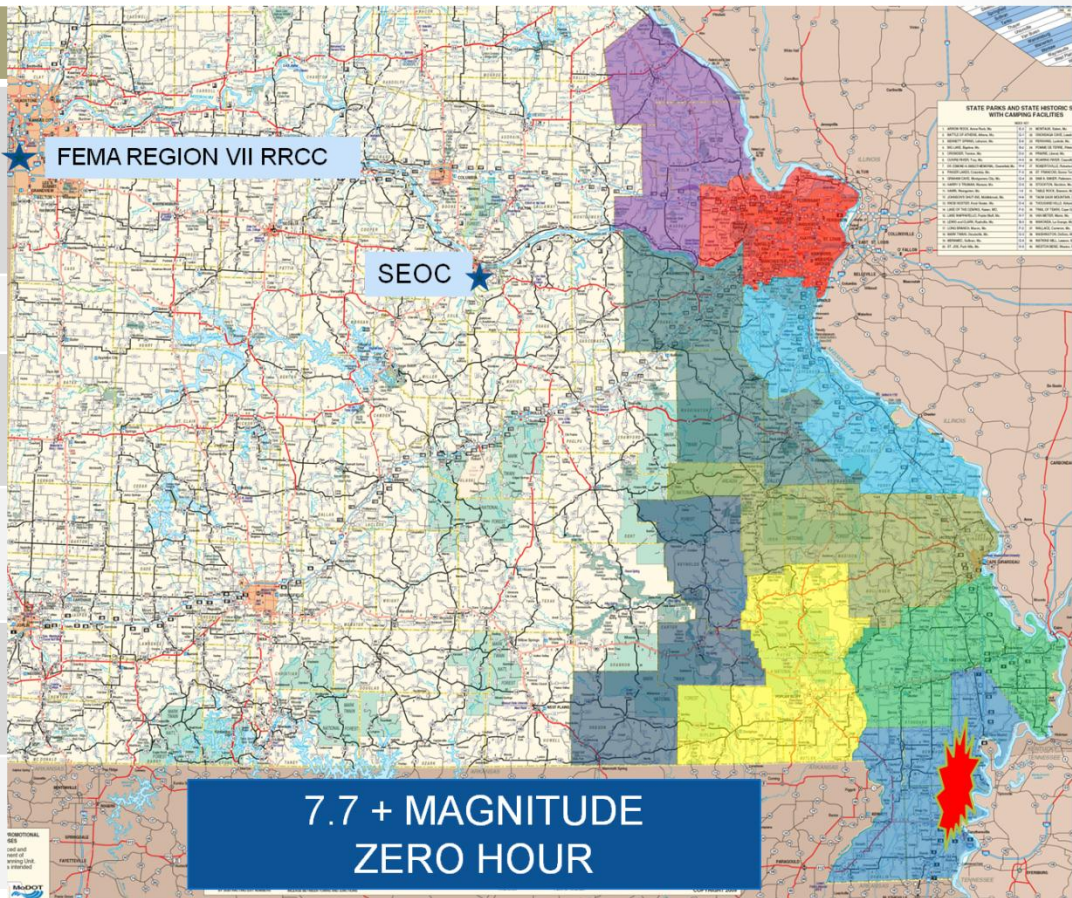


Missouri Impact Overview

Capstone 14 Exercise

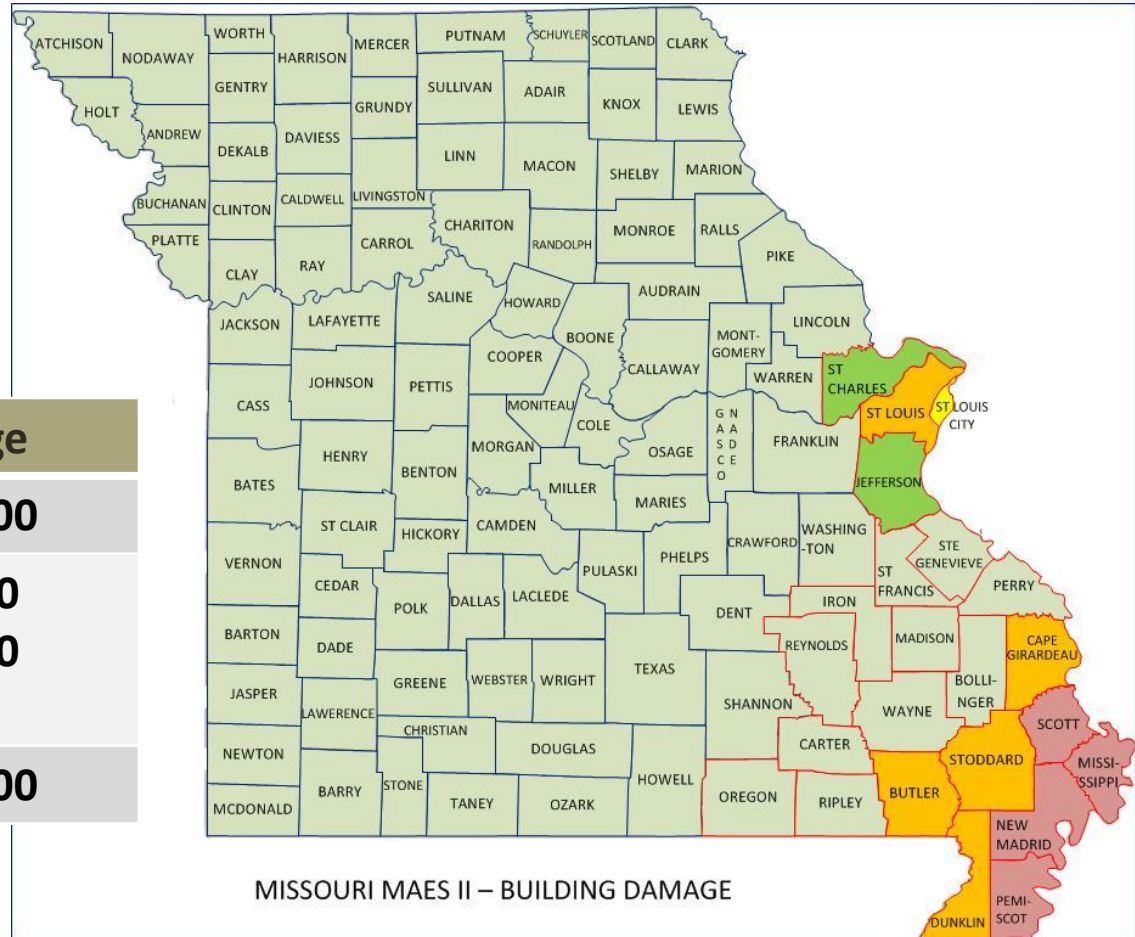
General Impact

Overview	
Total Structures Damaged	87,000
Total Injured	13,444
Total Fatalities	654
Total Seeking Shelter	237,991
Total Without Power	750,000 +
Total Without Water	307,000 +

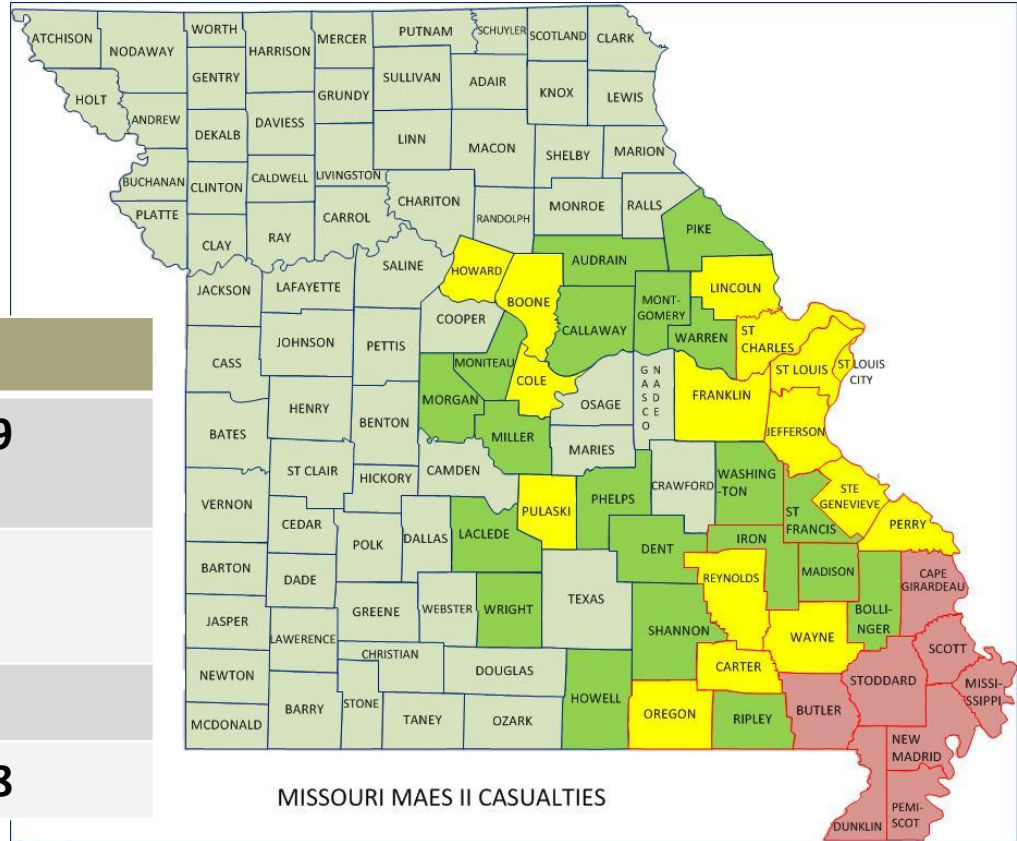


Building Damage

Breakdown of Damage	
Residential	83,600
Commercial, Industrial and Other	2000 1200
Total	86,800



Total Number of Injured

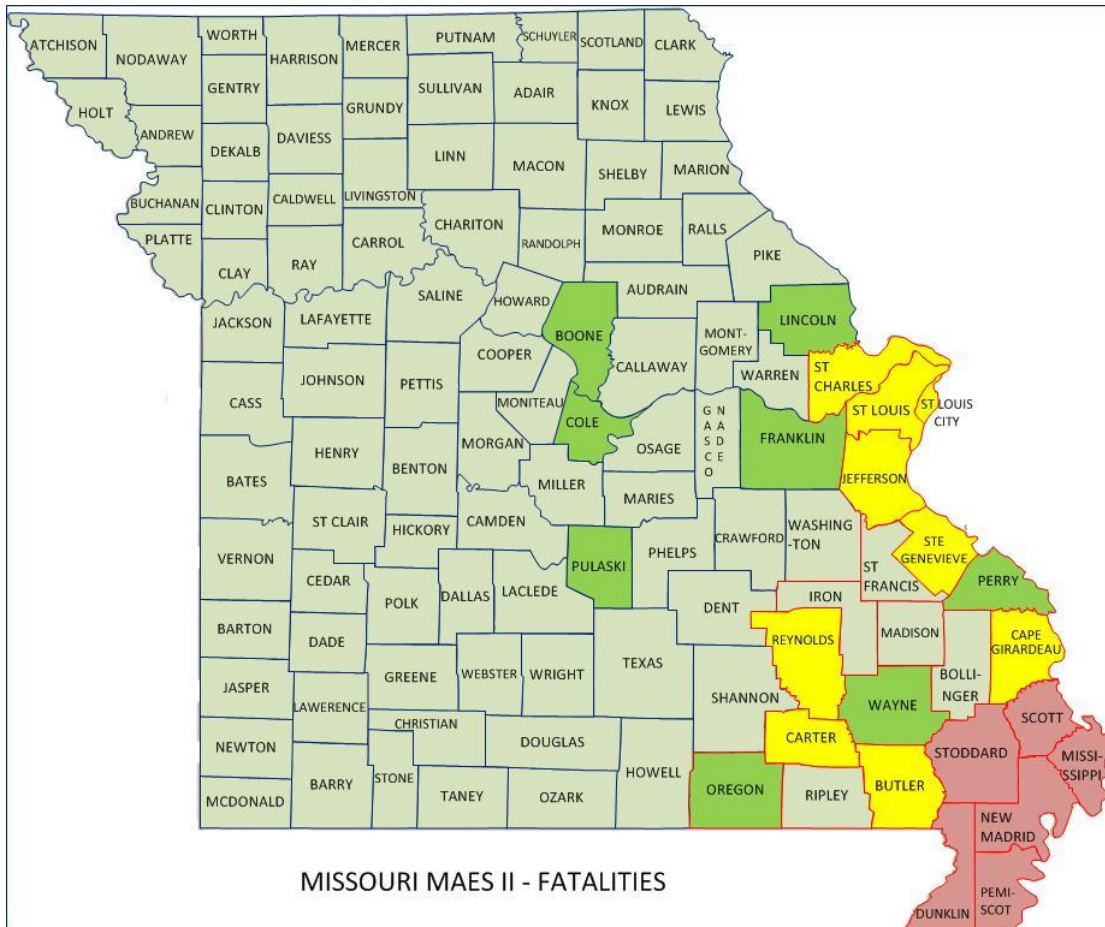


Breakdown of Injuries	
Medical Aid Needed	10,179
Hospital Care Needed	2,898
Life Threatening	361
Total	13,438

Total Number of Fatalities

Fatalities

Total	687
--------------	------------

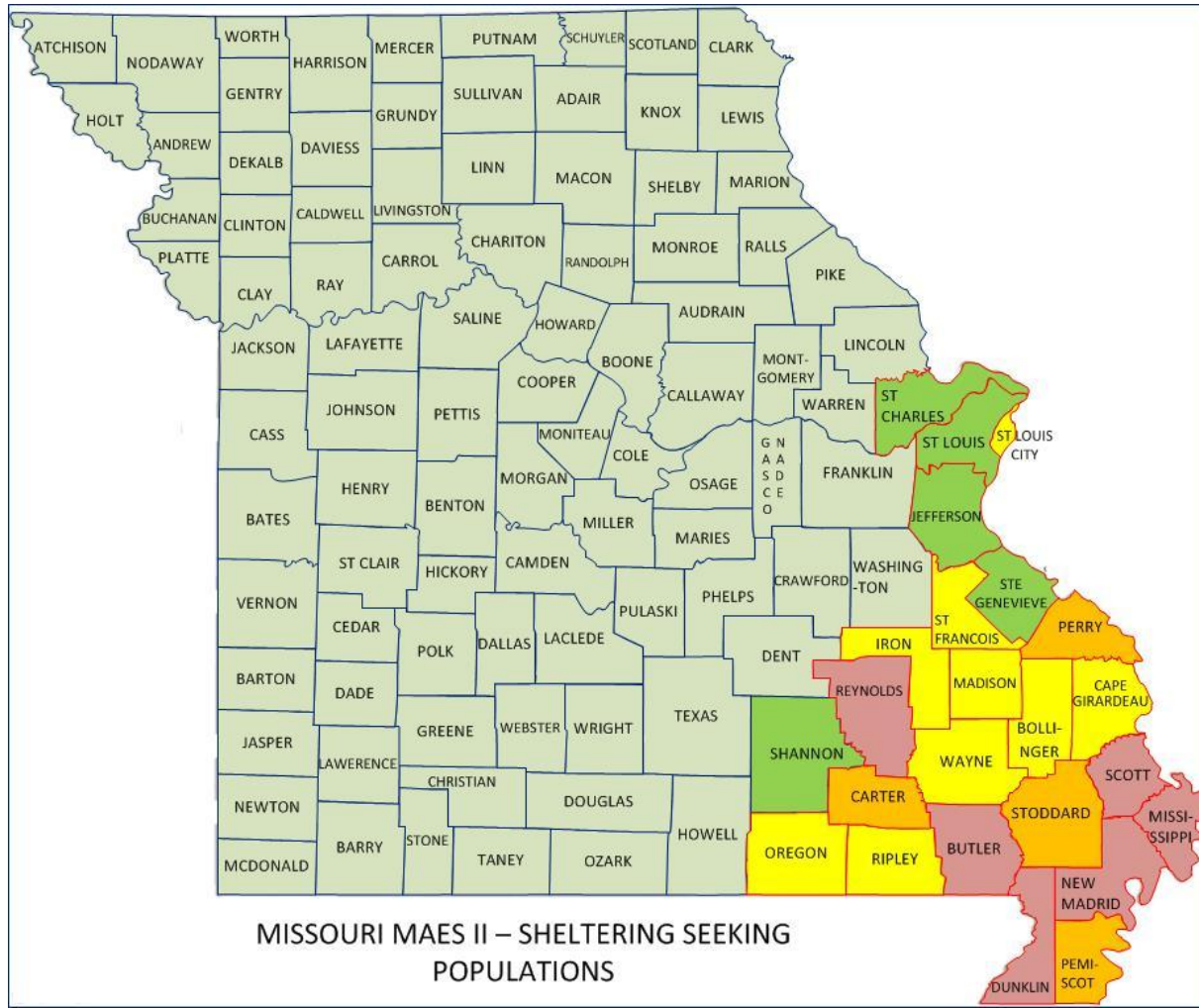


Shelter Seeking Populations

Shelter Seeking

Total

237991 +



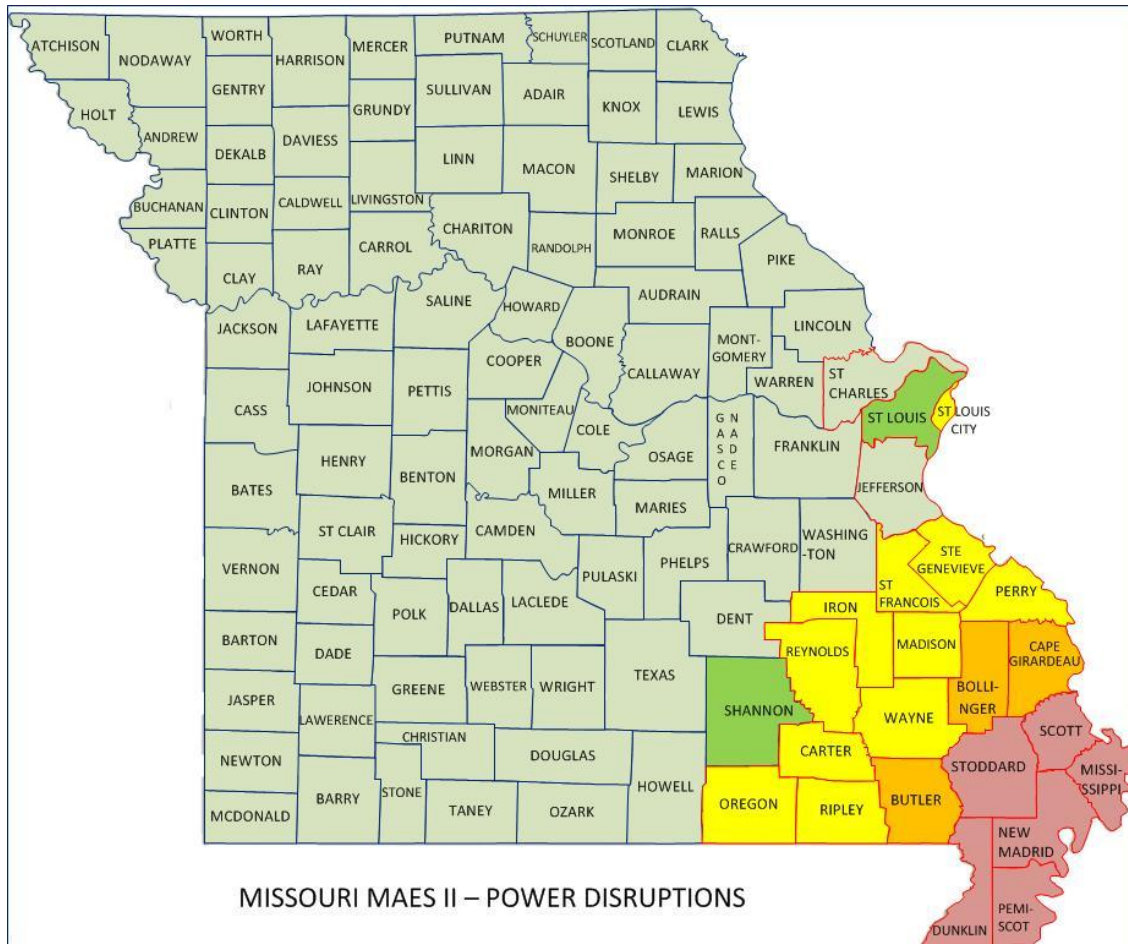
MISSOURI MAES II – SHELTERING SEEKING POPULATIONS

Power Disruptions

Number Affected

Total

**310,000
Households**

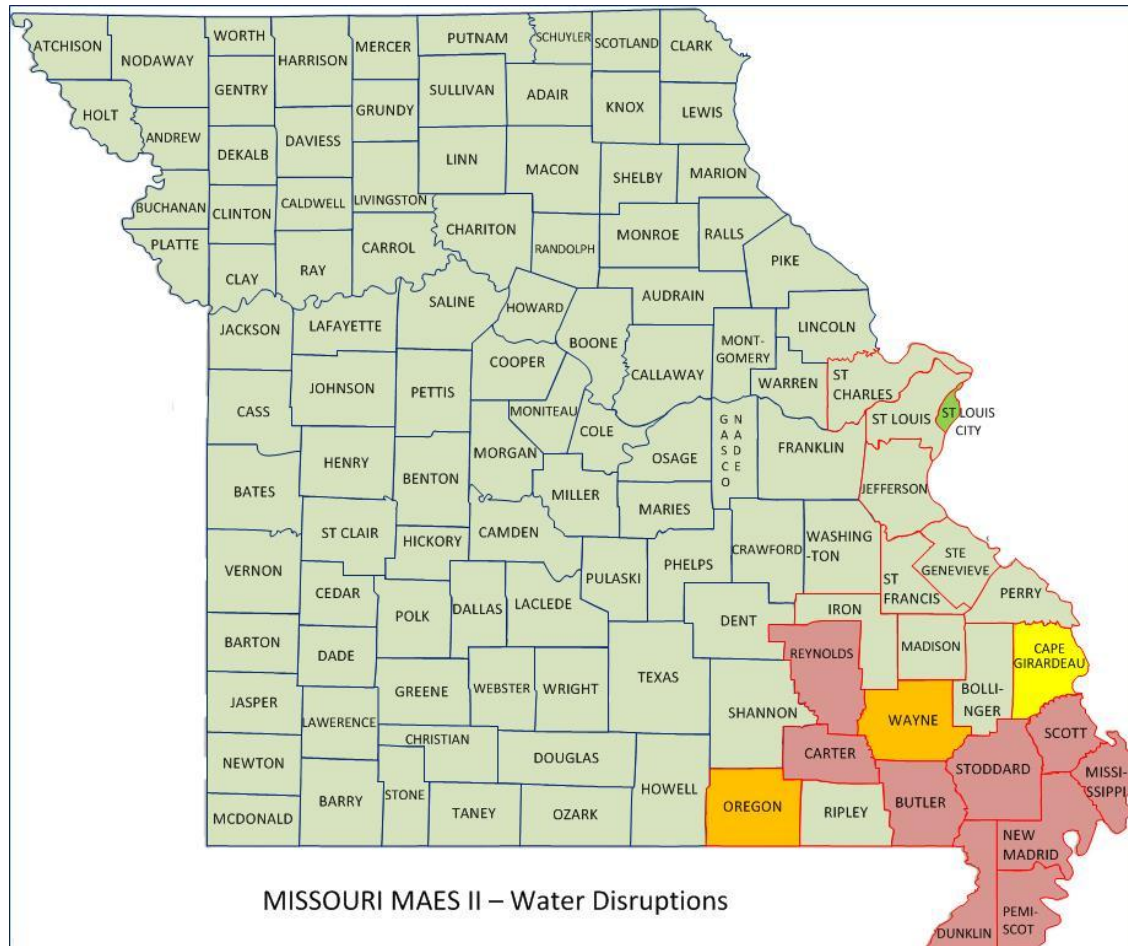


Water System Disruptions

Number Affected

Total

**124,000
Households**



MISSOURI MAES II – Water Disruptions

Immediate Priorities (E+72hrs)

Priorities

Life Saving

Clear Major Routes

Establish Reception Sites

Establish Logistical Bases

Establish Distribution Points

Critical Locations

Six Flags over St. Louis

Forrest Park, St Louis

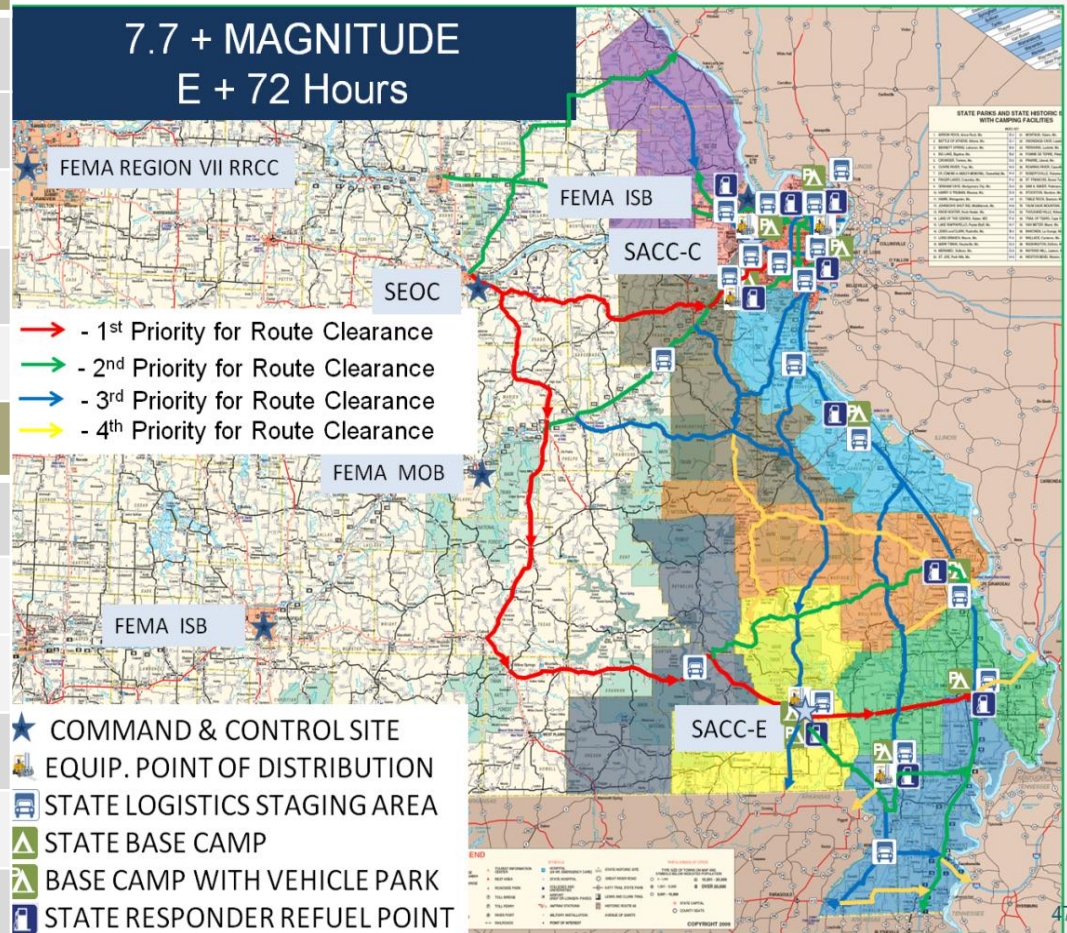
St Charles Convention Center

St Charles Soccer Park

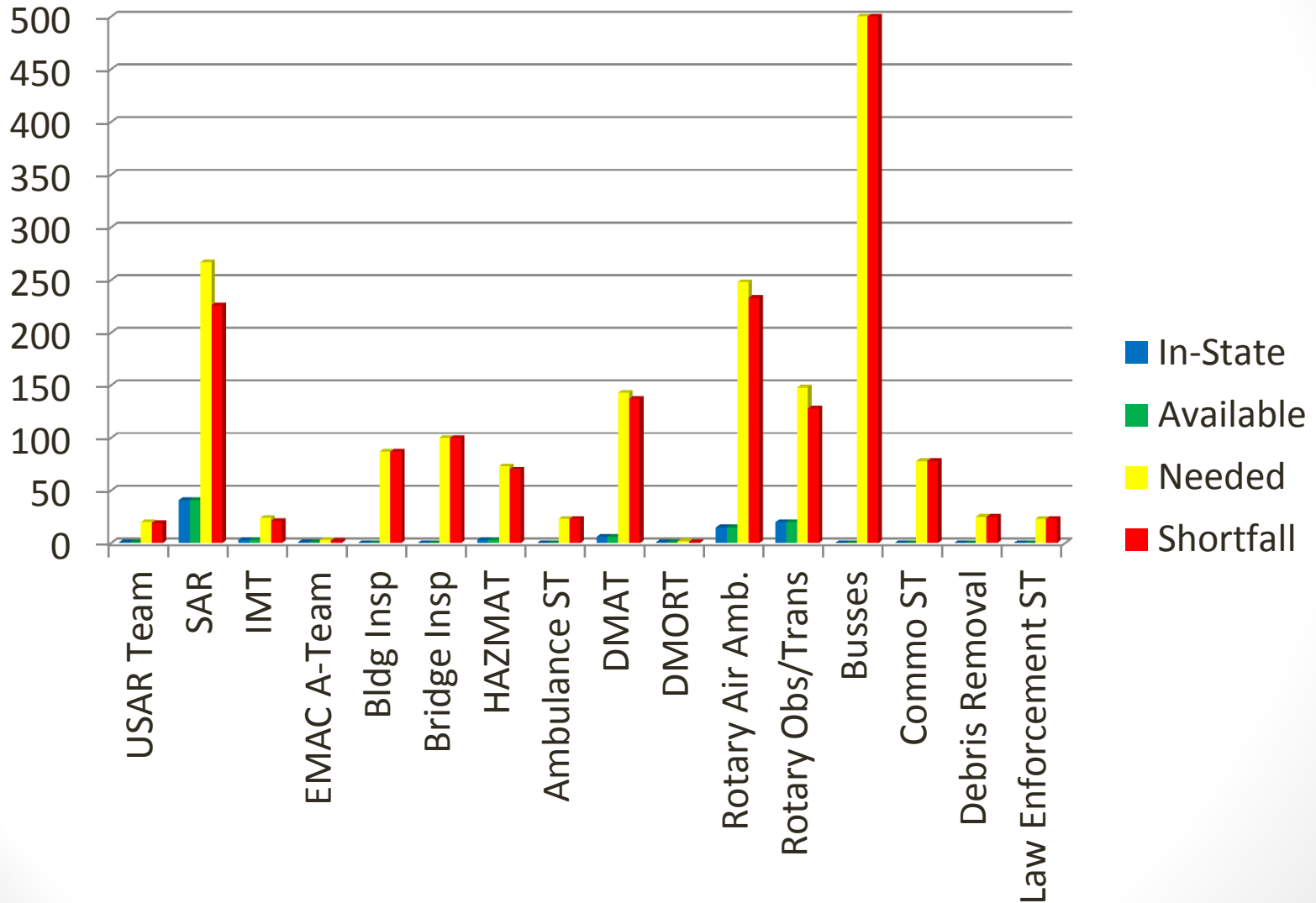
3 Rivers College, Poplar Bluff

Malden City Airport

Sikeston Fair Grounds



Missouri Resource Assessment



Planning Metrics

- **USAR – Per Joint FEMA/State Response Plan**
- **SAR – Per Joint FEMA/State Response Plan**
- **IMT – Per Joint FEMA/State Response Plan**
- **EMAC A-Team – 2 to support state team (24/7 shifts)**
- **Bldg/Bridge Inspection – ESF-3 & MODOT Initiated & supported**
- **HAZMAT – Known infrastructure assessment (refineries, chemical plants, etc)**
- **Ambulance Strike Team – Based on population density, casualty estimates, and transport distance (10 ambulance per team)**
- **DMAT – Per ESF-8 Response Plan and casualty projections**
- **DMORT – Per ESF-8 Response Plan and casualty projections**
- **Rotary Ambulance – Per ESF-8 Response Plan and casualty projections**
- **Rotary Observation and Transportation – Per ESF-1, ESF-9, ESF-13, ESF-16 response plans**
- **Busses – Per ESF-1, ESF-6, ESF-7, ESF-8 response plans**
- **Commo STS - Based on facilities activated**
- **Debris Removal – 1 per county**

Planning Metrics

QUESTIONS?