

CAPSTONE

14

Resource Allocation Workshop (RAW) II Indiana Brief Out



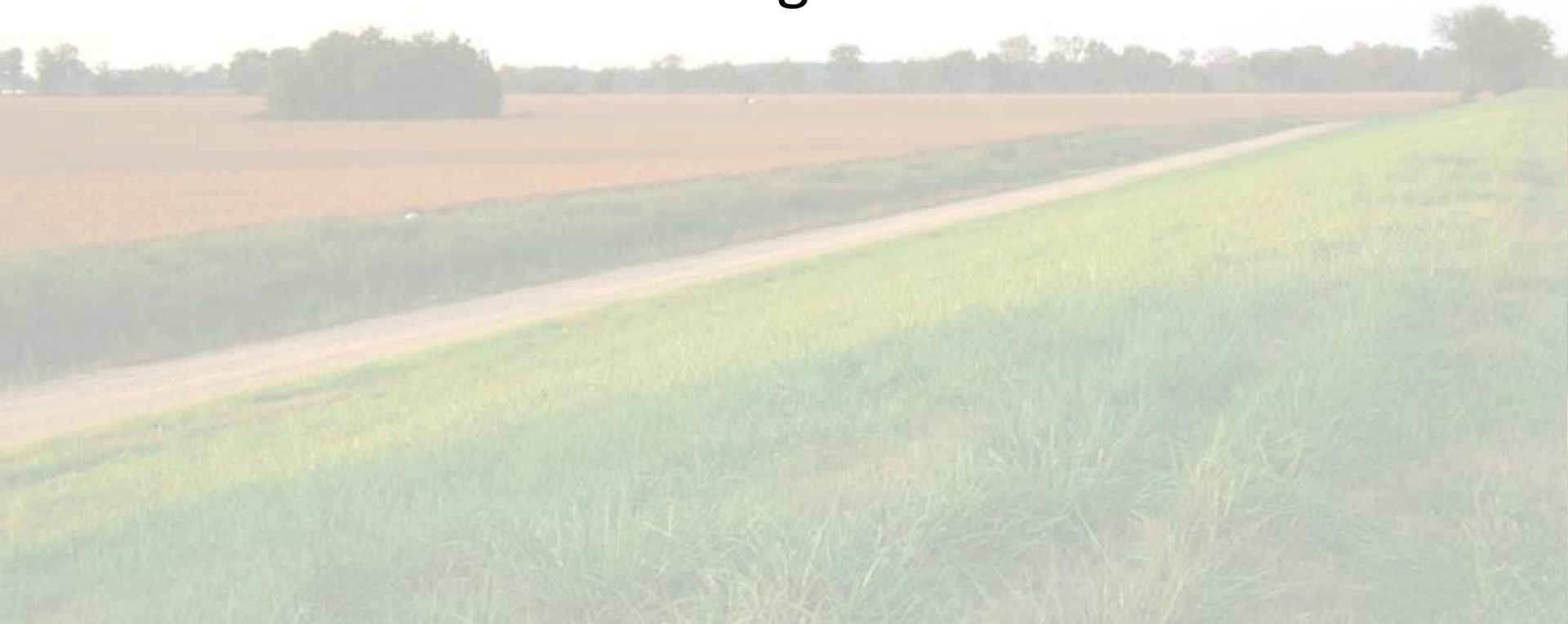
*November 4-5, 2013
N. Little Rock, Arkansas*

Participants

- Indiana DHS
- Ohio EMA
- NGB
- Red Cross
- With Support from Arkansas DEM

Topics of Discussion

- Resource Gaps
- NIMS Typing
- Definitions on Planning Metrics



Issues Resolved

- Identified available resources from Ohio.
- Michigan not present.
- Discussed Mass Sheltering resources available from Red Cross

Issues Pending Resolution

- Indiana, Michigan and Ohio to have meeting on Dec 4th to engage Michigan to continue address resource gaps.
- Supporting States, Michigan and Ohio still working on developing additional Mission Ready Packages.

Additional Clarification/Information

- Definitions of the 17 capabilities need to be better defined.
- Not all 17 Capabilities are NIMS typed.



Status of Resource Needs

	<u>In-State</u>	<u>Available</u>	<u>Needed</u>	<u>Shortfall</u>	OH	MI
USAR Team	2	2	4	2		
TRT Technical Rescue Team	20	15	30	15	3 Collapse Rescue	
SAR	12	12	66	48		
Type III IMT	9	9	24	15	2	
Type II IMT	0	0	3	3		
Type I IMT	0	0	2	2		
EOC Team	1	1	2	1	1	
EMAC A-Team	1	1	3	2	2	
Bldg Insp	24	24	100	76		
Bridge Insp	30	30	90	60		
HAZMAT	16	16	40	24	(1)	
Ambulance ST	20	20	40	20		
Med ERT	9	9	10	1		
Water Rescue	2	2	12	10	6	
Commo ST	0	0	20	20		
Debris Removal	40	40	150	110		
Law Enforcement ST	19	15	30	15	5	
Crowd Control	1	1	1	0		

Additional Comments

None



A wide-angle photograph of a rural landscape. In the foreground, a dirt road curves from the bottom left towards the middle right. To the right of the road is a lush green field, possibly alfalfa. To the left of the road is a large, flat, brown field, likely a cornfield. In the background, a line of trees stretches across the horizon under a sky filled with soft, white and grey clouds. The overall scene is peaceful and open.

Questions?