

How Do We Strengthen Mutual Aid?

+ **New EMAC Vision Statement:**

To strengthen the response through EMAC by working with state and local emergency management, first responders, federal partners, and stakeholders.

- How do we accomplish this?

Lesson Learned from Recent Events

- + States utilizing **INTRASTATE** mutual aid during incidents is on the rise!
 - ✓ Louisiana used their intrastate EMAC A-Team for Isaac
 - ✓ Alabama utilized intrastate for tornados

- + What does this do?
 - ✓ Saves money
 - ✓ Saves time
 - ✓ Strengthens community, state, and nation

- Do you know what resources are in your state?
- Are those resources ready to deploy intrastate or via EMAC?

Preparing for deployments?

Anyone in your state who would want to deploy intrastate or interstate should:

- ✓ Develop a Mission Ready Package
- ✓ Exercising the capability
- ✓ Update the Mission Ready Package with Lessons Learned

Reducing the time from request to mission deployment means knowing what you have and the costs associated with that mission.

What is Mission Ready Packaging?

- + Specific response and recovery capabilities organized, developed, trained, and exercised prior to an emergency or disaster
- + MRPs are based on—and the next logical step after—NIMS Resource Typing. The NIMS resource typed equipment are part of the Mission Ready Package
- + MRPs are developed by Resource Owners/Providers and coordinated with state EMAs

1. Speed – Faster Response
2. Reimbursement - Reduce Issues

Equipment

- Dump truck
- Articulating rubber-tired loader
- GPA Units
- Chain saws
- Cameras
- Costs

Personnel

- Positions or names with contact information
- Salaries/fringe benefits

Commodities

- Fuel
- Spare chains, bars, oils, files
- Costs
- Personal protective gear

Example: Debris Removal Support Package

Food

- Per diem rates
- Receipt estimates

Travel/Lodging

- Per diem rates
- Receipt estimates
- Airfare
- Mileage
- Costs

Other Costs

- Decontamination
- Maps of disaster area
- Equipment rehabilitation
- Costs

MASS: Mutual Aid Support System

- + MASS is software code that focuses on Mission Ready Packaging
- + MASS can talk to your existing resource management software
- + MASS pulls your *current resource inventory* and adds the Mission Ready Packaging fields
- + Export a spreadsheet (XML) from MASS that you can upload directly into the offer section of the EMAC Operations System
- + **You** control the data view and who can see your resource inventory

Why do we need MASS?

- + How many states know about all of the resource inventory systems and efforts ongoing in their state?
 - ❖ There are MANY efforts out there by the fire service, law enforcement, and others to inventory and share resource inventories with one another.
 - ❖ None of them are Mission Ready Packaged
 - ❖ Do you have access to view the inventory of these systems?
- + Can you use these inventories for planning and GAP analysis?

Current Catalog of Capabilities

MRP Catalog Details Report

97 of 788

State Joint Reception, Staging, Onward Movement & Integration Center (JRSOI) IMT Package Type 4

NIMS Discipline: Incident Management

Category: Emergency Management ESF-5

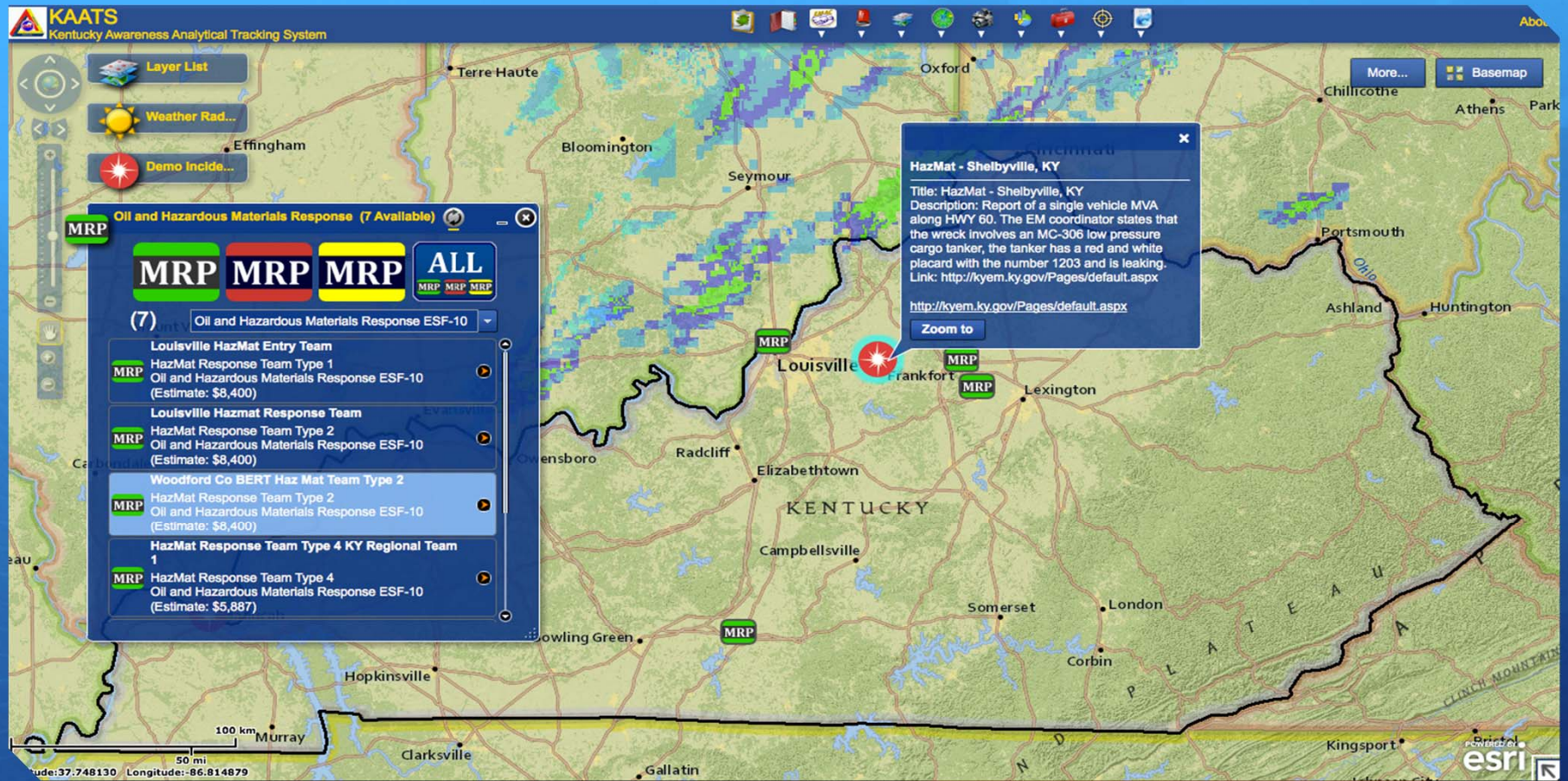
Resource: State Joint Reception, Staging, Onward Movement & Integration Center (JRSOI) IMT Package Kind: Team

Type 4
:

Liaison with EM Field Command and Local County EM Directors. Part of EMAC Planning

Position	Quantity	Notes
Base Camp Manager	2	
Communications Technician	1	
Deputy JRSOI Center Coordinator	1	
Display Processor	2	
Equipment Time Recorder	1	
Facilities Unit Leader	1	
Ground Support Unit Leader	1	
JRSOI Center Coordinator	1	
Medical Unit Leader	1	
Personnel Time Recorder	1	
Procurement Unit Leader	1	
Safety Officer	1	
Status Check-In Recorder	3	
Supply Unit Leader	1	
Support Dispatcher	2	
Type of Equipment	Quantity	Notes
Flip chart with paper and Markers	2	
ID Badge Equipment and Supplies	1	
Logistical Section Kit	1	
Radio	20	
Cell Phone	20	
All in one printer	2	
Vehicle	4	
Laptop with printer	10	
GPS	4	

97 of 788

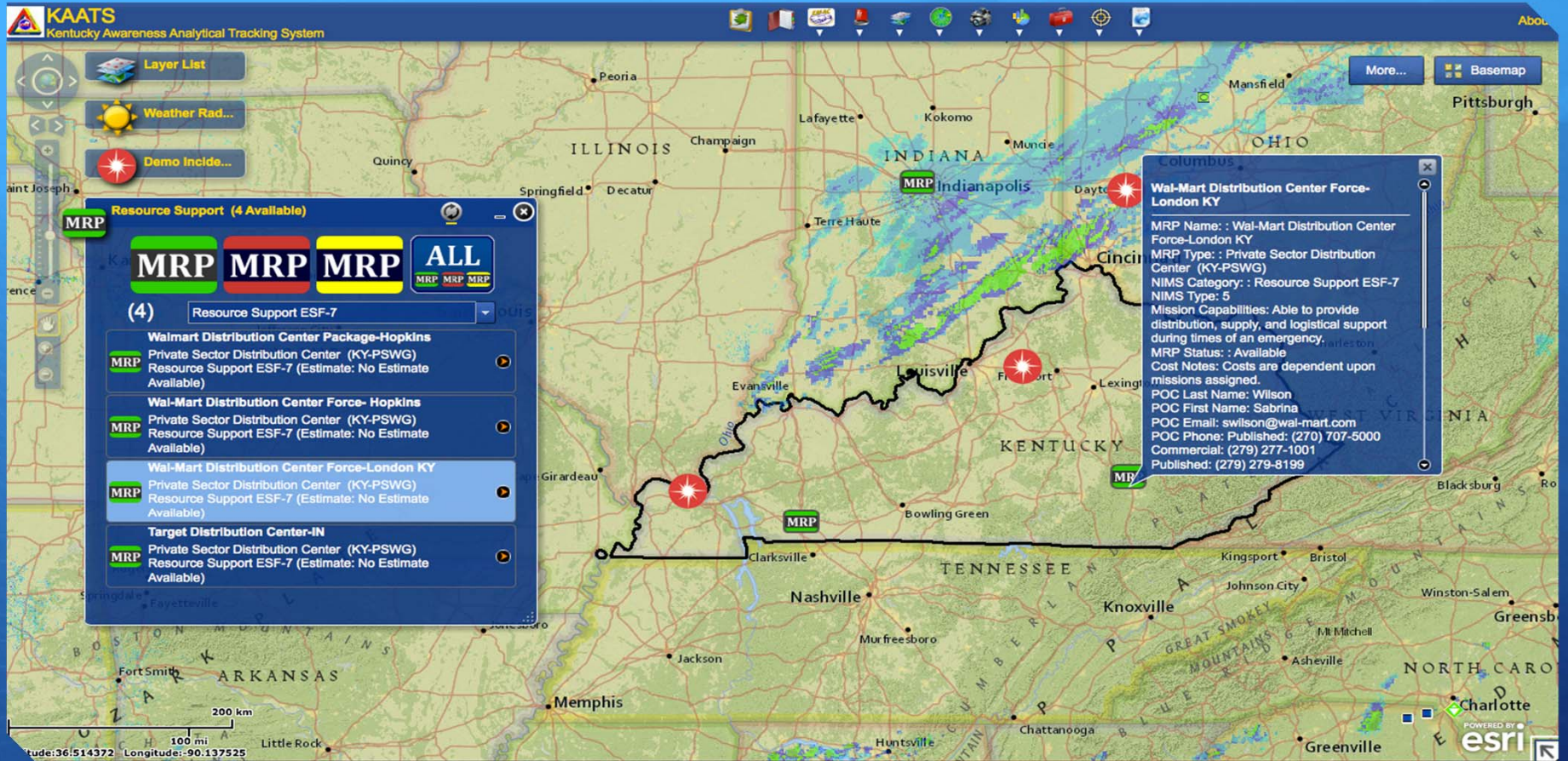


Intrastate Use of MASS

HazMat Incident in Northern Kentucky

Demonstration of Intrastate Resources in MASS



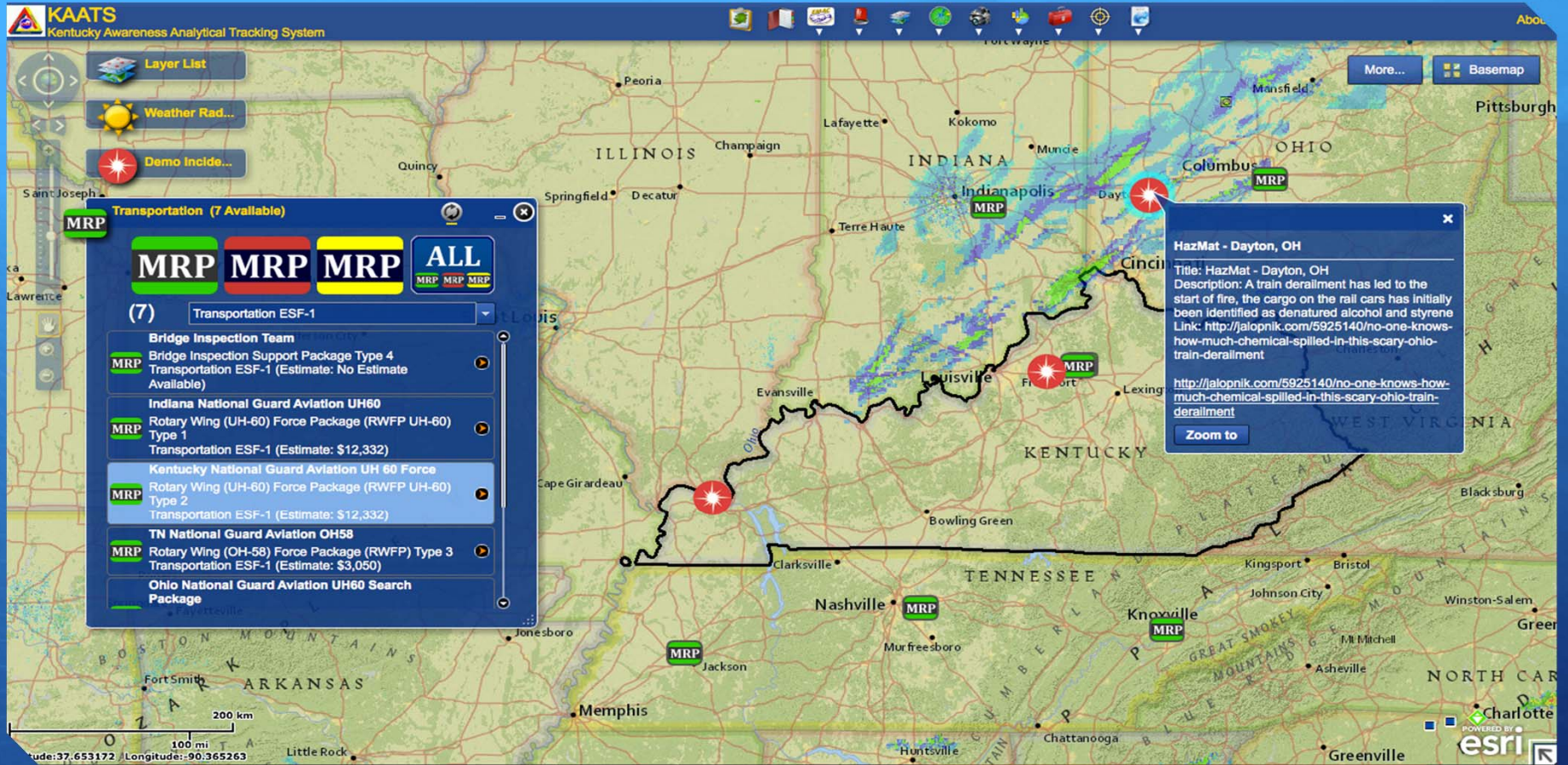


Private Sector Integration Into MASS

New Madrid Event – Railroad repair and debris removal



Demonstration of Private Sector Resources in MASS



EMAC Use of MASS

HazMat event in Southern Ohio

Provide HazMat response Tracking # 290-RRBCAST-962-417 - Message (HTML)

File Message

Ignore X Delete Reply Reply All Forward Meeting More

Junk Delete

Technology Anal... To Manager Team E-mail

Rules OneNote Actions

Mark Unread Categorize Follow Up

Translate Find Related Select

Zoom

Subject: Provide HazMat response Tracking # 290-RRBCAST-962-417

Event Name:	Exercise - NEMA Demo		
State Mission TN #:	OH-2012-10-0091	EM Software TN #:	
Requesting Agency:	Dayton, Ohio HazMat	EMAC TN #:	290-RR-962
Requesting State REQ-A Contact:			
First Name:	Tammy	Last Name:	Little
Phone 1:	(614) 799-3659	Phone 2:	
Email 1:	tlittle@dps.state.oh.us	Email 2:	
Mission Type/Source:	State	Type / Status:	Fire - HazMat
Mission Description:	Provide HazMat response		
Resource Description:	(see NIMS Type) - Fully capable HazMat response team		
NIMS Type:	Fire and Hazardous Materials Resources - HazMat Response Team - Type I		
# Requested:	1	# Type:	Team(s)
Deployment Dates (including travel days):			
Mobilization:		Demobilization:	
Deployment Date:	2012-10-07	Demobilization Date:	2012-10-19
Duty Length:	13		

Demonstration of EMAC

Offer exported from MASS



Mission Offer

- Information
- Cost Summary
- Personnel
- Equipment
- Commodities
- Other Costs
- Notes

Export to EMAC

Information ▼

Organization	Woodford Co BERT HazMat Response Team Type 1		
EMAC Request ID		Mission Type	
Mission Description	Investigate and mitigate loss resulting from a Hazmat incident. Assist in cleanup.		
Resource Description	Complete and capable Hazmat Team, Type 1. Self Supporting for the first 24 hours		
Number Requested	1	Number Type	
Deployment Date	10/2/2012	Demobilization Date	10/8/2012
Total Days for Mission	6		
Status	Available	National Guard Status	
Assisting State	Indiana		
Discipline			
Created	9/27/2012 3:44:23 PM grant.t.gillion	Modified	9/28/2012 10:07:46 AM grant.t.gillion

Cost Summary ▶

Personnel ▶

Equipment ▶

XML File That is Exported out of MASS

```
<?xml version="1.0"?>
- <MissionOffer>
  - <MissionOffer xmlns:xsd="http://www.w3.org/2001/XMLSchema" xmlns:xsi="http://www.w3.org/2001/XMLSchema-instance">
    - <EntityKey>
      <EntitySetName>MissionOffers</EntitySetName>
      <EntityContainerName>MASSEntityModelContainer</EntityContainerName>
      - <EntityKeyValues>
        - <EntityKeyMember>
          <Key>MissionOfferID</Key>
          <Value xsi:type="q1:guid" xmlns:q1="http://microsoft.com/wsdl/types/">a102b2f8-00df-4163-b958-ca176a72cf7f</Value>
        </EntityKeyMember>
      </EntityKeyValues>
    </EntityKey>
    <MissionOfferID>a102b2f8-00df-4163-b958-ca176a72cf7f</MissionOfferID>
    <RequestID>1001</RequestID>
    <Status>Negotiation</Status>
    <AssistingState>KY</AssistingState>
    <DateCreated>2012-09-19T10:48:49.86</DateCreated>
    <MissionType>Mental Health Assessment</MissionType>
    <Discipline>Mental Health</Discipline>
    <NationalGuardStatus/>
    <MissionDescription>Requesting a mental health assessment team in IN.</MissionDescription>
    <ResourceDescription>Mental Health Assessment team.</ResourceDescription>
    <NumberRequested>1</NumberRequested>
    <NumberType>Unit</NumberType>
    <DeploymentDate>2012-09-26T00:00:00</DeploymentDate>
    <DemobilizationDate>2012-10-10T00:00:00</DemobilizationDate>
    <TotalDaysMission>14</TotalDaysMission>
    <TotalReqACostEstimate>2439</TotalReqACostEstimate>
    <TotalPersonalVehicleTotalCosts>150</TotalPersonalVehicleTotalCosts>
    <TotalRentalVehicleTotalCosts>85</TotalRentalVehicleTotalCosts>
    <TotalGovernmentVehicleTotalCost>25</TotalGovernmentVehicleTotalCost>
    <TotalAirTotalCosts>0</TotalAirTotalCosts>
    <TotalExpensesMealsTips>354</TotalExpensesMealsTips>
    <TotalMealsTipes>70</TotalMealsTipes>
    <TotalLodging>200</TotalLodging>
    <TotalParkingFees>25</TotalParkingFees>
    <TotalShipmentAndTransportationCosts>210</TotalShipmentAndTransportationCosts>
```

Tracking Information

EMAC TN:

Assisting State TN:

State EM Software TN:

Assisting Agency:

Assisting State REQ-A Contact

First Name:

Last Name:

Phone 1:

Phone 2:

E-mail 1:

E-mail 2:

Mission Details

Mission Type/Source:

If State:

If NG:

Mission Description:

Resource Description:

NIMs Type:

Requested: # Type:

In-State Resource Point of Contact

First Name:

Last Name:

Phone 1:

Phone 2:

E-mail 1:

E-mail 2:

Pre-Scripted Mission Assignments: *The Whole Package*

Mutual Aid Support System (MASS) - Windows Internet Explorer
 http://app.kyemweb.com/mass/Forms/ProjectPlanDetail.aspx?id=9a596377-0374-49b1-b89d-4903a5373c90

Response Plan

- Information
- Missions
- Notes

Information

Name: New Madrid Seismic Event (NMSZ) Pre-scripted Assignment Plan

Description: Pre-scripted mission assignments that will be activated upon a NMSZ event.

Status: Available

Owning Organization: KYEM Operations Branch

Missions

EmergencySupport	Title	Mission	ResponsePlanMissionCategory	OnStationTime	Duration					
ESF #9 - Search & Rescue	KY 1041	Assist in collapsed structure search and rescue operations in the city of Paducah in the event of a New Madrid seismic event.		0700	48					
MRPCatalog *		StationAssignment	OnStationTime	Duration	Quantity	# Assigned	Notes			
Structural Collapse Assessment IMT		Base camp Paducah	0700	48	1	1				
MRP *		State	City	POCName	POCEmail	POCPhone	OnStationTime	Duration	RequestType	Notes
BERT Structural Collapse Search and Rescue Team (IMT) Type III		Nicholasville	Gregg Bayer			Mobile: (859) 123-987 0700		48		
ESF #9 - Search & Rescue		KY 1051	To Conduct Regional Water Search and Rescue Operations in support of Task Force River during NMSZ event.				0700	48		

Notes

Consensus and Adoption

Phase 1

- Attend workshop to get code base
- Request code base

Phase 2

- Install MASS – connect to exist system or standalone

Phase 3

- Work towards Mission Ready Packaging deployable resources in your state

Phase 4

- Connect your MRP database to the ESRI Flex viewer

Phase 5

- Use MASS for locating resources (be able to download XML to upload into EMAC EOS)

Phase 6

- Share MASS data with NEMA

Next Steps

- + The CUSEC states will be using MASS for Capstone 2014
- + Workshop that focuses on the improvement of the system
 - + Upgrade the map interface (ESRI Flex Viewer 3.0)
- + Who is interested in working on integrating their current resource inventory system with MASS or using MASS as their primary resource inventory system?